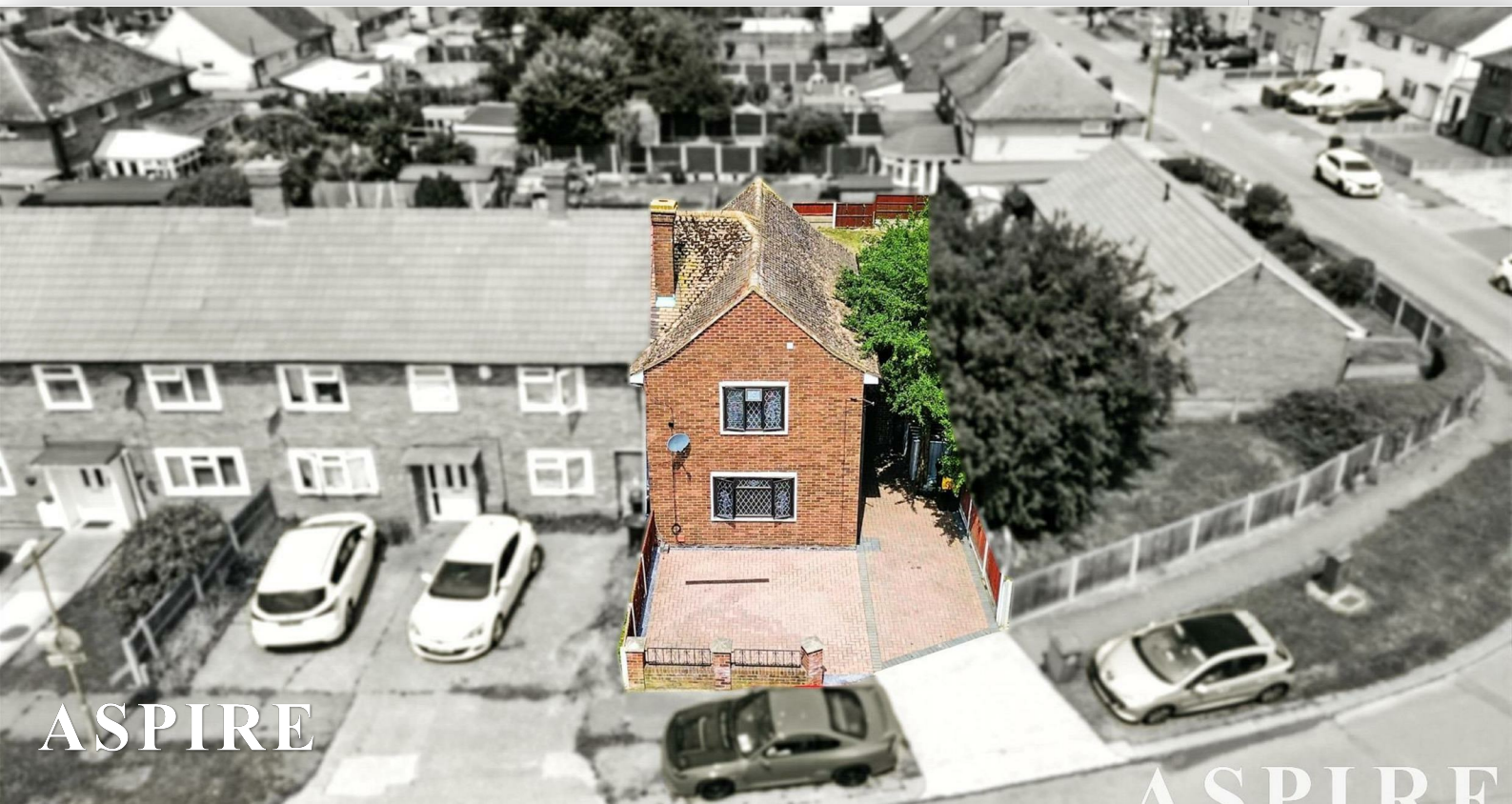


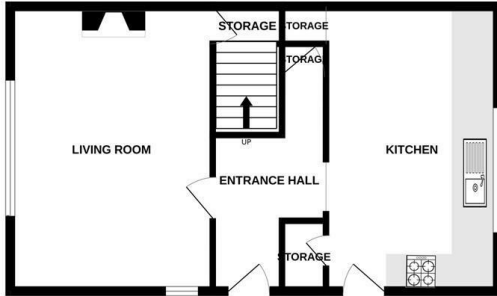
To arrange a viewing contact us
today on 01268 777400



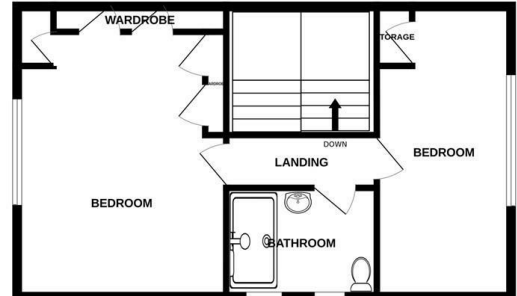
St. Marys Crescent, Basildon Price guide £300,000

Aspire Estate Agents are pleased to present this well-positioned two-bedroom semi-detached home, located in the ever-popular St. Mary Crescent, SS13 2AS. This appealing property offers a fantastic opportunity for first-time buyers, young families, or investors alike. With ample off-street parking and a spacious rear garden, the home provides a perfect blend of practicality and potential, all in a well-connected and family-friendly neighbourhood. Guide Price: £300,000 - £350,000

GROUND FLOOR
599 sq.ft. (55.7 sq.m.) approx.



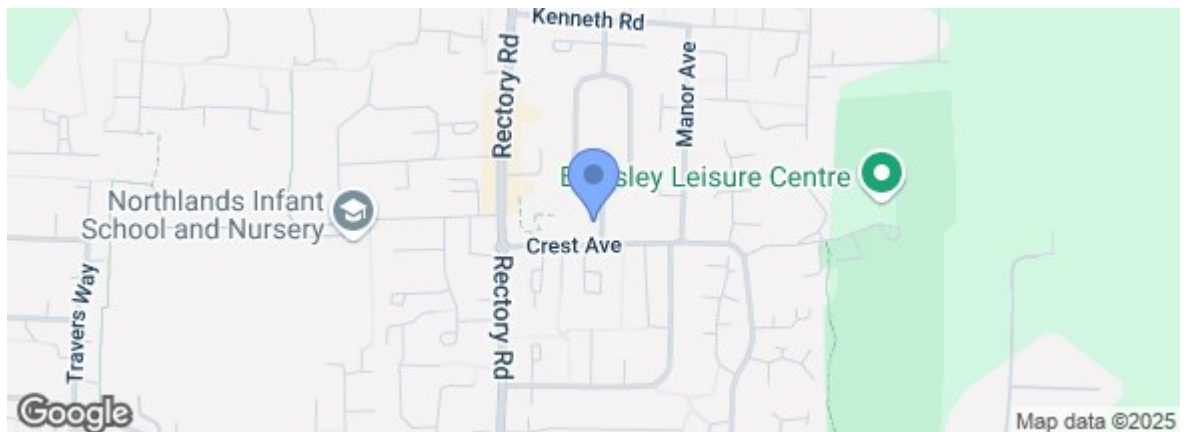
1ST FLOOR
531 sq.ft. (49.3 sq.m.) approx.



TOTAL FLOOR AREA : 1130 sq.ft. (105.0 sq.m.) approx.

Whilst every attempt has been made to ensure the accuracy of the floorplan contained here, measurements of doors, windows, rooms and any other items are approximate and no responsibility is taken for any error, omission or mis-statement. This plan is for illustrative purposes only and should be used as such by any prospective purchaser. The services, systems and appliances shown have not been tested and no guarantee as to their operability or efficiency can be given.
Made with Metropix ©2025

Energy Efficiency Rating		Current	Potential
Very energy efficient - lower running costs			
(92 plus)	A		
(81-91)	B		
(69-80)	C		
(55-68)	D		
(39-54)	E		
(21-38)	F		
(1-20)	G		
Not energy efficient - higher running costs			
England & Wales		EU Directive 2002/91/EC	
Environmental Impact (CO ₂) Rating		Current	Potential
Very environmentally friendly - lower CO ₂ emissions			
(92 plus)	A		
(81-91)	B		
(69-80)	C		
(55-68)	D		
(39-54)	E		
(21-38)	F		
(1-20)	G		
Not environmentally friendly - higher CO ₂ emissions			
England & Wales		EU Directive 2002/91/EC	



Under the Property Misdescriptions Act 1991 we make every effort to ensure our sales details are accurate but they are a general outline and do not constitute any part of an offer or contract. Any services, equipment and fittings have not been tested and no warranty can be given as to their condition. We strongly recommend that all the information provided be verified by your advisors and in particular, measurements required for a specific purpose such as fitted furniture or carpets. Please tell us if you have any problems and members of our branches will help either over the phone or in person. A copy of our complaints procedure is available on request. The details are issued on the strict understanding that any negotiations in respect of the property named herein are conducted through Aspire Estate Agents.